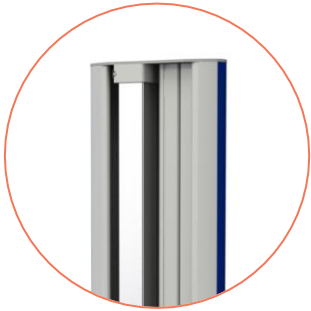


# Flexx one 2G

Medical equipment cart



100mm double  
wheel casters



Cable channel &  
Stainless-steel  
mounting pole



**Jansen**  
medicars

## Flexx one medical equipment cart

The Flexx one medical equipment cart is the single-column model in the Flexx cart line and is designed for a compact installation of medical equipment. This model comes in two different heights and can be used for a variety of applications, ranging from monitor stands to more complex applications, such as the setup of equipment for endoscopic surgery.

### Modular concept

The Flexx line carts are all based on a standardized modular concept, allowing to assemble each cart configuration according to customer requirements. The Flexx one cart is available in two different heights: 100cm and 150cm

The basic cart contains a solid undercarriage with 100mm double wheel castors, of which the front two are equipped with a double break. The vertical column of the cart contains a cable channel and a stainless steel section for mounting the accessories.

Available accessories are:

- Shelves & Drawers
- Holders & brackets, such as IV poles, scope & camera holders
- Gas cylinder holders
- Monitor mounts
- Power strip, mains cable,
- Isolations transformers & Battery Power System

Please feel free to discuss specific features if above-mentioned accessories do not meet your requirements. We can design and produce tailor made products that will meet your expectations.

### Characteristics

#### Flexx one 2G 100

- |                      |              |    |
|----------------------|--------------|----|
| • Dimensions (wxdxh) | 552x652x1038 | mm |
| • Weight             | 32           | kg |
| • Registration       | MDR Class 1  |    |

#### Flexx one 2G 150

- |                      |              |    |
|----------------------|--------------|----|
| • Dimensions (wxdxh) | 552x652x1548 | mm |
| • Weight             | 35           | kg |
| • Registration       | MDR Class 1  |    |

#### Flexx one 2G 180

- |                      |              |    |
|----------------------|--------------|----|
| • Dimensions (wxdxh) | 552x652x1828 | mm |
| • Weight             | 37           | kg |
| • Registration       | MDR Class 1  |    |

ENT endoscopy cart for polyclinic



Compact veterinary endoscopy cart



Stand for 32" 3D medical grade monitor

